

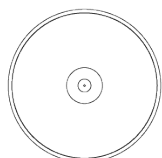
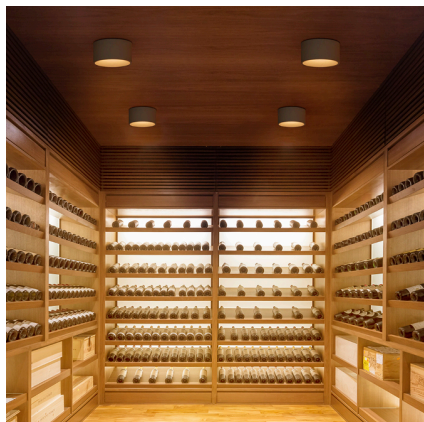
Bind solo

6700

VIBIA

The Bind Solo spotlight provides smooth contrasts, flooding the space from above thanks to its generous diameter and wider-angle light gradient.

Model Sheet



Ø 18,5 cm

Finish

- 04 Black
NCS S 8500N
- 24 Beige M1
test ral

LED temperature color

2700 K / 3000 K /
3500 K / Tunable
White

Dimming

CASAMBI / DALI / PUSH DALI

Installation type

Surface

Materials

Body: Aluminum
Optics: PC- Polycarbonate

Light source

1 x LED 13W 700 mA



LED

CRI>90 1395 lm 107,3
2700 K / 3000 K / 3500 K /
Tunable White

Driver

Constant Current 700
200~240 V V 50~60 Hz HZ



Dimmable

LED

IP20

50-60Hz

200-240V

Application

Ceiling Lamps

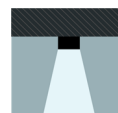
Packaging

1 Box
0.21 m x 0.2 m x 0.13 m
Gross weight 1.7
Net weight 1.2
Vol. 0.0054

Lighting effect

Accent

Narrow: Angles less than 20°. Suitable for generating high contrasts or projections at far distances. Medium: Angles between 20° and 40°. Suitable for generating medium contrasts or projections at medium distances. Wide: Angles greater than 40°. Suitable for generating moderate contrasts or projections at near distances



Photometric Data

All of our products come with a five-year warranty. Check our legal terms at www.vibia.com/warranty

Vibia Lighting, S.L.U.

Office / Oficina
Progrés 4-6. 08850 Gavà. Barcelona, Spain.

International T +34 934 796 971
Spain / Portugal T +34 934 796 970

customer.service@vibia.com
vibia.com