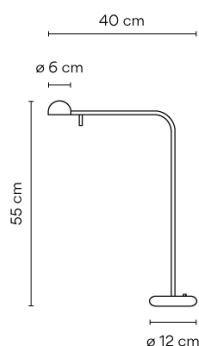


1655

Design By Ichiro Iwasaki

Table lamp. Design by Ichiro Iwasaki. This reading lamp is characterized by having a long arm and an adjustable head. Available in white, black, cream and green matt finishes.

Model Sheet



Finish

- 58 Cream
NCS S 2005-Y20R
- 93 White
NCS S 0502-Y
- 04 Black
NCS 9000N

LED temperature color 2700 K

Dimming On/Off

Installation type Plug-in

Materials

- Head: Aluminium
- Base: Zinc Alloy
- Diffuser: PC- Polycarbonate
- Rods: Steel

Light source 1 x LED 4,48W 350mA



LED CRI>90 452.95 lm 100.66 2700 K

Driver Constant Current 350 100~240 V V 50~60 Hz HZ

Remarks Switch on the base



LED IP20

Bi-volt 50-60Hz

Application Table Lamps

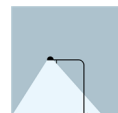
Packaging

- 1 Box
- 0.67 m x 0.357 m x 0.2 m
- Gross weight 3.68
- Net weight 2.2
- Vol. 0.0478

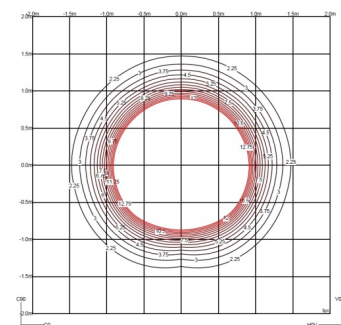
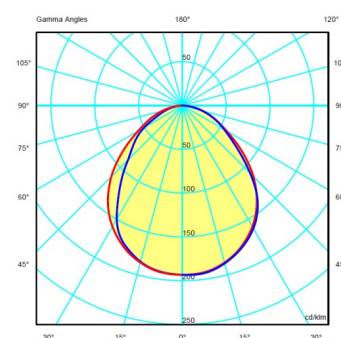
Lighting effect

Reading

Lamp having a light beam whose main function is to supply sufficient light for reading.

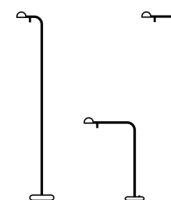


Photometric Data



Efficiency 31.88 lm/W
Coordinate System CG
Total Flux 192.18 lm
Maximum Value 80.54 cd

Other Applications



All of our products come with a five-year warranty. Check our legal terms at www.vibia.com/warranty

Vibia Lighting, S.L.U.

Office / Oficina
 Progrés 4-6. 08850 Gavà. Barcelona, Spain.

International T +34 934 796 971
 Spain / Portugal T +34 934 796 970

customer.service@vibia.com
 vibia.com